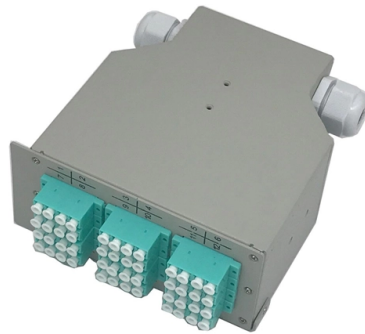


# Requirements for replacing electrical distribution boxes at construction sites



## Overview

This fact sheet explains how to apply the requirements shown in AS/NZS 3012:2019 Electrical installations – construction and demolition sites (AS/NZS 3012:2019), which is called up as a mandatory standard by section 163 of the Work Health and Safety Regulation 2025 (WHS Regulation). This guidance is aimed at those responsible for planning and subsequent management, and those who control the installation and use of electrical systems and equipment on construction sites. However, exposure to weather, frequent relocation, rough use and other conditions not normally encountered with conventional wiring systems necessitate special consideration not require in other applications or in completed structures. Site selection requirements: The distribution box should be installed in an area close to the power supply to reduce. In this guide, we'll break down everything you need to know to install a distribution box correctly and confidently. Choose the right box based on environment (indoor/outdoor), load capacity, and durability. Check for proper IP/NEMA ratings and material quality. Ensure safe placement: install in. 1□ The manufacture and installation of distribution box and switch box shall meet the following requirements: 1.

## Article Content

Nov 13, 2025

Requirements And Specifications For Installation Of

The installation requirements and specifications of Distribution box involve many aspects, including site selection, fixing method, wiring specifications

Feb 16, 2026

Temporary electrical wiring for construction sites

Temporary for construction Construction work requires electrical power for many purposes. However, exposure to weather, frequent relocation, rough use and other conditions not normally encountered

Jan 14, 2026

I want to install or replace electric wiring. Do I need permission?

Your contract with the electricity distribution company has conditions about safety which must not be broken. In particular, you should not interfere with the distribution company's equipment which

Dec 26, 2025

Distribution box

In this article, you will learn everything you need to know about installing, expanding or replacing a distribution box - from the legal basis to practical implementation.

May 20, 2026

Detailed introduction of safety requirements for distribution box

The distribution box shall be installed in the area where the electric equipment is relatively concentrated. 3. The power distribution and lighting distribution of construction electricity should be

Sep 11, 2025

The installation requirements for the distribution box

Learn how to install a distribution box safely and correctly. Covers wiring, placement, standards, and expert tips for a compliant setup.

Jul 31, 2025

Best Practices for Installing Temporary Electrical Systems on ...

Learn how to set up and maintain reliable temporary electrical systems for construction projects.

Feb 22, 2026

Site Boxes in stock at One Elec: express delivery

A site box is an electrical device used on temporary sites such as construction sites, market stalls, campsites and trade fairs. It provides temporary electrical distribution before the electrical panel is

Nov 22, 2025

How to Install a Distribution Box—A Comprehensive

Whether you are an electrical contractor or a construction brigade, knowing how to properly and safely install distribution boxes is the basis of

Jul 31, 2025

Electrical safety on construction sites

This guidance is aimed at those responsible for planning and subsequent management, and those who control the installation and use of electrical systems and equipment on construction sites. This

Dec 28, 2025

How to Install a Cable Distribution Box Safely and

In modern electrical systems, cable distribution boxes (also known as electrical distribution boxes or distribution boxes) play a crucial role as the key

Apr 26, 2026

Temporary electrical installations on construction and

Electrical site distribution equipment All units for the distribution of electricity are to comply with BS 4363 Specification for distribution assemblies for

Nov 20, 2025

Electrical Installations at Construction Sites

A construction site has special electrical requirements. Not every electrical firm will provide such services since there are special standards to uphold and legal

Mar 16, 2026

ENERGYBOX Assemblies for Construction Sites (ACS)

ENERGYBOX is a complete range of Assemblies for Construction Sites (ACS) pre-wired boards that can be wall-mounted or installed on a support.

Dec 12, 2025

### Temporary Construction Power Box Guide: Portable Distribution

This article explains how temporary construction power boxes work, the key components involved, and how E-abel portable electrical enclosures combined with industrial connector systems

Jul 05, 2025

### Power supply on the construction site

A site power distribution board is usually an electrical distribution box equipped with various sockets to provide power for different equipment and machinery. A construction power distribution box may also

Oct 25, 2025

### Construction site electrical enclosure

Find your construction site electrical enclosure easily amongst the 25 products from the leading brands (HLC, WALTHER WERKE, DIGITAL ELECTRIC, ...) on

Aug 05, 2025

### Electrical practices — construction and demolition sites

The standard sets out minimum requirements for the design, construction and testing of electrical installations that supply electricity to appliances and equipment on

Apr 14, 2026

### Quality Control for Installation and Construction of Electrical Riser ...

Master the key quality control methods for electrical riser & distribution box installation. Ensure safety, compliance, and prevent hazards in building electrical systems.

Dec 16, 2025

### Reuters | Breaking International News & Views

Find latest news from every corner of the globe at Reuters , your online source for breaking international news coverage.

Jan 28, 2026

### Electrical safety on construction sites

Details It explains what to do to reduce the risk of accidents involving electricity. It includes advice on safe working practices for everyone who controls or influences the design, specification, selection,

Dec 30, 2025

## Essential Guidelines for Safe Temporary Electrical

This article aims to provide a comprehensive overview of the essential guidelines for safe temporary electrical installations on construction sites, focusing on Best

Jul 25, 2025

## Requirements for distribution box at construction site

Rubber insulated cables shall be used for the incoming and outgoing lines, and the incoming and outgoing ports shall be set at the lower end face of the box body, with protective rings added.

## Contact Us

For more information, pricing, or custom solutions, please contact us:

Website: <https://moletenare-ew.co.za>

Email: [info@moletenare-ew.co.za](mailto:info@moletenare-ew.co.za)

Phone: +86 138 1658 3346

Address: Ningbo, China

This document is for informational purposes only. Specifications subject to change without notice.

