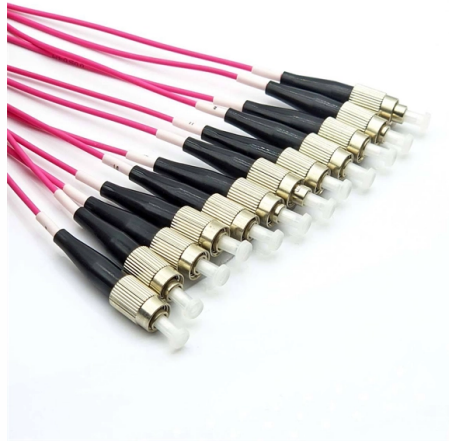


Standard Distribution Box Marking



Overview

ISO 780:2015 specifies a set of graphical symbols conventionally used for marking of distribution packages in their physical distribution chain to convey handling instructions. ISO 780:2015 is applicable to packages containing any kind of. These universal pictograms, properly placed on the boxes, serve as guidance for the perfect handling of the cargo, since they are not accompanied by written words and are understandable anywhere in the world. In addition, they are standardized according to ISO 780:1997. ISO Symbols standardized for. In the world of shipping, it is imperative that handlers of cargo understand the items they are dealing with. The following instructions are an additional contractual agreement to the. ISO (the International Organization for Standardization) is a worldwide federation of national standards bodies (ISO member bodies).



Article Content

Feb 27, 2026

Universal Shipping Marks for Export Packing

The symbols applied to crates and packages in shipping are vital to ensure correct handling. Our guide explains these universal markings.

Jan 16, 2026

Welcome to Channel Dive | Channel Dive

Welcome to Channel Dive. We're Informa TechTarget's new publication, focused on delivering daily news and analysis for executives at North

Apr 25, 2026

Universal Shipping Marks for Export Packing

In this guide, we cover the universal shipping marks used in export packing; displaying the markings, defining what they mean, and explaining when

Sep 04, 2025

Standards

ETSI develops global ICT standards that enable interoperability, cybersecurity, and sustainable, market-ready products and services.

Mar 05, 2026

Standard Practice for Pictorial Markings for Handling of Goods

Pictorial Markings for Handling of Goods¹ This standard is issued under the fixed designation D5445; the number immediately following the designation indicates the year of original adoption or, in the

Dec 30, 2025

C57.12.70-2020

Standard terminal markings and connections are described for single-phase and three phase distribution, power, and regulating transformers. For terminal markings, it covers sequence

Feb 04, 2026

Distribution Box Wiring Steps

Marking and Inspection Power Supply Marking: The AC, DC or different voltage levels of the power supply in the distribution box should be

Jan 01, 2026

ISO 780:2015

This International Standard specifies a set of graphical symbols conventionally used for marking of distribution packages in their physical distribution chain to convey handling instructions.

Nov 25, 2025

Microsoft Word

1.0 SCOPE This document describes standard symbols that promote safe handling of packages delivered to and within Snap-on facilities. This document is not intended to supersede any local or

Jan 19, 2026

Complete Guide to Electrical Panel Labels

There are many regulations that apply to electrical panel labels as well as tagging and labeling of related equipment. Here's what you need to know.

Dec 25, 2025

C57.12.70-2000

Supersedes C57.12.70-1978 (R1992). Standard terminal markings and connections are described for single-phase and three-phase distribution, power, and regulating transformers. For

Jun 17, 2026

Standard Practice for Pictorial Markings for Handling of Goods

It is the responsibility of the user of this standard to establish appropriate safety, health, and environmental practices and determine the applicability of regulatory limitations prior to use.

Jul 03, 2025

IEC Standard for Power Distribution Board Design and

Designing a power distribution board is not just about placing components inside a metal box. It requires a deep understanding of international

Jan 22, 2026

Electrical Panel Labeling Standards: Easy Guide

Electrical panel labeling standards come from many regulatory agencies, so it's important to learn about the specific requirements that apply to your workplace.

Sep 02, 2025

PACKAGING, MARKING AND SHIPPING GUIDELINE

The markings shall be durable, waterproof, fade resistant and able to withstand prolonged storage in bright sunlight and harsh conditions. The colour shall be in sharp contrast to the background on

Nov 23, 2025

Packaging and Marking Guideline

The marking must be attached permanently and such that it is properly legible and visible, on at least two opposite sides of the packaging. The colour must be seawater-proof and light-resistant.

Jan 29, 2026

A Comprehensive Guide to Packaging Symbols: Global

Introduction: Navigating the Maze of Packaging Symbols In the global packaging industry, one small symbol can carry immense weight. Whether it's a mark

Jan 07, 2026

Standard

ISO 780:2015 specifies a set of graphical symbols conventionally used for marking of distribution packages in their physical distribution chain to convey handling instructions. The graphical symbols

Sep 26, 2025

ISO Symbols for Packaging

These universal pictograms, properly placed on the boxes, serve as guidance for the perfect handling of the cargo, since they are not accompanied by written words

Sep 11, 2025

How to Read and Interpret Your Distribution Box Labels

Understand your distribution box labels to identify circuits, improve safety, and troubleshoot electrical issues in your home with confidence.

Dec 26, 2025

United Nations Development Programme

Hier sollte eine Beschreibung angezeigt werden, diese Seite lässt dies jedoch nicht zu.

Dec 13, 2025

Markings – Transport Informations Service

Marking must be clear and precise. Its color should stand out clearly from that of the package; black RAL 9005 paint is used. Alternatively, it may also be applied on

Feb 03, 2026

Technical Requirements for Distribution Box in Electrical Industry

Different industries, different products have different technical requirements, in the electrical industry, distribution boxes, distribution boxes are no exception, distribution boxes, distribution boxes are also

Jun 29, 2025

Packaging — Distribution packaging — Graphical symbols for

In such case, according to the provisions of the distribution contract, we need to decide whether to stop shipping and storing them or to continue to use them by putting proper graphical symbols on them.

Jul 15, 2025

PC57.12.70/D6, July 2011

Standard terminal markings and connections are described for single-phase and three-phase distribution, power, and regulating transformers. For terminal markings, it covers sequence designation, external

Sep 09, 2025

IEC 61439-3 Ed. 2.0 b:2024—Operation of Distribution

IEC 61439-3:2024 edition 2.0 defines specific requirements for distribution boards intended to be operated by ordinary persons.

Contact Us

For more information, pricing, or custom solutions, please contact us:

Website: <https://moletenare-ew.co.za>

Email: info@moletenare-ew.co.za

Phone: +86 138 1658 3346

Address: Ningbo, China

This document is for informational purposes only. Specifications subject to change without notice.

