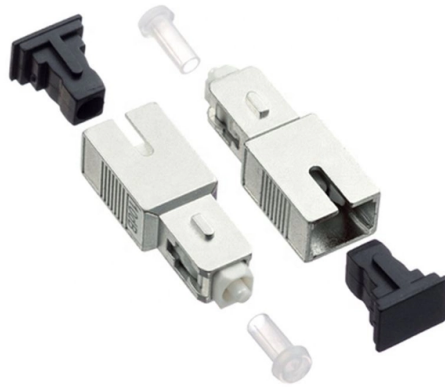


Which side of the distribution box has the live wire grounded



Overview

26 mm² (10 AWG) ground wire must be used, and in all other markets a 6 mm² must be used. In a typical service entrance diagram, you will find four wires: two hot wires, a neutral wire, and a grounding wire. The neutral wire provides a return path for the current, while the grounding wire is. They make it easy to identify immediately which wires are live, neutral, or grounded (avoiding costly mistakes and hazardous accidents). It's sort of grounded if there is a ground cable from a ground rod & cold water pipe. Problem. System grounding Ground or earth provides a common return path for electric current in an electric circuit. It is created by connecting the neutral point of an installation to the general mass of the earth or a chassis.



Article Content

Oct 03, 2025

DISTRIBUTION BOX

Each DISTRIBUTION BOX and controller must be grounded. On the US market, a 5.26 mm² (10 AWG) ground wire must be used, and in all other markets a 6 mm² must be used.

Jul 17, 2025

Breaker Box Wiring: Which Wires Are Neutral and

Your breaker box wiring includes three main wire types: black hot wires carry electricity to outlets, white neutral wires return unused power, and

Jan 24, 2026

ITPro Today, Network Computing, IoT World Today combine

ITPro Today, Network Computing and IoT World Today have combined with TechTarget . The page you are looking for may no longer exist.

Jul 18, 2025

Neutral and the earth are bonded at the main panel or

For a grounded chassis device the chassis can become live only if two (or three faults occur). Two fault case: Earth connection broken AND Live wire shorted to

Dec 08, 2025

How to determine the size, installation method and

(1) Wiring method of distribution box 1) Generally, the incoming line of power distribution box adopts five wire system, that is, a, B and C three-way phase line

Oct 02, 2025

JLC Field Guide: Grounding

JLC Field Guide: Grounding The purpose of grounding is safety: A ground wire generates a short circuit and trips the circuit breaker or fuse when

May 27, 2026

How to Install a Cable Distribution Box Safely and

Misconception: If the cable distribution box is not grounded or has poor grounding, it is easy to cause electric shock accidents when the box is

Jun 02, 2026

Grounding System Installation Standards for Distribution Boxes and ...

Hey there! If you're working with electrical systems, you know that grounding isn't just some bureaucratic requirement—it's literally the difference between a safe, functional system and a potential disaster.

Mar 15, 2026

Understanding Your Breaker Box: How L1, L2, and Neutral Work

In a typical North American home, the power delivered to your breaker box is split into two “hot” wires, L1 (Line 1) and L2 (Line 2). Each of these lines carries 120 volts of alternating current (AC) and is

Mar 20, 2026

Correct Connection Method Of Grounding Wire Of

Open the distribution box and find the position marked with the grounding plate or PE letter. This position is the connection point of the grounding

Aug 13, 2025

Electric Basics: What is a Live Wire, What is a Neutral Wire

Black: Hot wire or Live Wire Green (sometimes bare): Ground Safety Considerations When performing any electrical work on your home, it's important

Jun 14, 2026

DISTRIBUTION BOX

The extra ground wire between the mounting plate and the spindle plate can be omitted in certain applications: If the tool cable is maximum 30m. If two or more spindles are used, and

Apr 30, 2026

The basics of primary distribution circuits (substation

The most common distribution primaries are four-wire, multi-grounded systems: three-phase conductors plus a multigrounded neutral. Single

Nov 03, 2025

Earth Ground And The Grid

Here, the voltage is typically stepped down from 22 kV to 19 kV. One side of the secondary is the single transmission wire and the other side goes to

Aug 24, 2025

Distribution Box Wiring Steps

Wiring and Binding Wiring Direction: Wiring between the main circuit breaker and each branch circuit breaker in the box generally goes on the left, and

Dec 17, 2025

The Basics of Grounding & Bonding Electrical Systems

Table 2. Use Table 250.102 (C) (1) for sizing grounded conductors, main bonding jumper, system bonding jumper and supply-side bonding jumper for AC systems

Mar 21, 2026

How To Tell If Electrical Box Is Grounded - Storables

Learn how to determine if an electrical box is properly grounded with this informative article. Ensure your electrical system is safe and compliant.

Jun 09, 2026

Understanding the 4 Wire Service Entrance Diagram

In a typical service entrance diagram, you will find four wires: two hot wires, a neutral wire, and a grounding wire. The two hot wires, also known as the live wires, carry the electric current into the

Jul 09, 2025

Livewire 11-Outlet Power Conditioner and Distribution

This 11-outlet Power Conditioner from LiveWire is just what your rack of gear needs to maintain consistent voltage levels throughout all connected components. The

Nov 06, 2025

Understanding the Live Earth and Neutral Wire in

An analysis of the key roles of the live earth and neutral wire helps readers understand their functions and differences in transformers.

Dec 23, 2025

Is my panel grounded? I don't see a ground wire anywhere on ...

Sub panel has a ground wire going to a ground rod. I don't see one on the main panel however. The neutral bus is bonded (green screw) to

Jan 27, 2026

Breaker Box Wiring: Which Wires Are Neutral and

It can be difficult to tell where the neutral or ground wires are

May 31, 2026

The Importance of Ground Wires in the Breaker Box: A

The ground wire in a breaker box is a crucial element of an electrical system, providing safety and preventing electrical shocks. Learn more about its

Jul 22, 2025

Your Complete Guide to Wiring Color Codes and Safety

The wiring color codes are the standard safety language of electricity. They make it easy to identify immediately which wires are live, neutral, or

Dec 15, 2025

7. Ground, earth and electrical safety

Earth is a direct physical connection to the Earth. This is usually done by driving a copper rod (earth stake) into the ground. But, depending on age and location of the system this can also be a copper

Feb 06, 2026

Size determination, installation method and wiring mode

The distribution box is the central hub of the home circuit and the general control of our daily power consumption. It is an indispensable electrical equipment. If there

Mar 09, 2026

120V Branch Circuits: Wiring and Safety Essentials

The article discusses the wiring of typical 120-V branch circuits, focusing on receptacle outlets, switch outlets, and light outlets. It covers essential safety

May 22, 2026

The Complete Guide to Distribution Box: Installation, Types & More

Can I add circuits to an existing distribution box? Circuit additions are possible if the distribution box has adequate capacity and available spaces. However, you must ensure the total

Contact Us

For more information, pricing, or custom solutions, please contact us:

Website: <https://moletenare-ew.co.za>

Email: info@moletenare-ew.co.za

Phone: +86 138 1658 3346

Address: Ningbo, China

This document is for informational purposes only. Specifications subject to change without notice.

